



Kalyani

1	Crop	Finger millet
2	Variety	Kalyani
3	Parentage	Selection from Naidupet local (CR 562)
4	Breeding Method	Pure line selection
5	Year of release	1979
6	Release through CVRC/SVRC	SVRC
7	Crop duration	100-105
8	Season	Kharif and Rabi
9	Potential yield	25-30 q/ha
10	Area suitability	General cultivation in Rayalaseema & Telangana
11	Salient features	Mean plant height is 75 cm. Erect plant type and determinate in growth habit. Good tillering. Nodes have purple pigmentation. Ear heads have light purple pigmentation. Leaf sheath is greenish white. Compact and medium length panicle with top curved fingers. The panicle has 8-9 fingers. Brown colour seed.



Padmavathi

1	Crop	Finger millet
2	Variety	Padmavathi (PR 2350)
3	Parentage	Selection from Tirupati local
4	Breeding Method	Pure line selection
5	Year of release	1993
6	Release through CVRC/SVRC	SVRC
7	Crop duration	100-105
8	Season	Suitable for late plantings in Kharif and matures earlier by week under rainfed conditions. Suitable for irrigated rabi season.
9	Potential yield	25-30 q/ha
10	Area suitability	Andhra Pradesh
11	Salient features	Plant grows to a height of 80 cm with determinate growth. Anthocyanin pigmentation is present at nodes, glumes and leaf sheath. Medium long internode. Leaf blade is glabrous with erect flag leaf. Semi compact panicle 7-8 incurved fingers. Brown colour seed



Saptagiri

1	Crop	Finger millet
2	Variety	Saptagiri(PPR 2614)
3	Parentage	MR -1 x Kalyani
4	Breeding Method	Pedigree method of breeding
5	Year of release	1995
6	Release through CVRC/SVRC	SVRC
7	Crop duration	105-110
8	Season	Kharif and Rabi
9	Potential yield	25-30 q/ha
10	Area suitability	Andhra Pradesh
11	Salient features	Suitable for early planting situations; Non-lodging; tolerant to water logging as well as drought situations. The mean plant height is 90 cm. Plant is determinate in growth habit with purple pigmentation at nodes. The ears have light purple pigmentation. Semi compact long panicle with top curved fingers. Brown colour seed



Vakula

1	Crop	Finger millet
2	Variety	Vakula (PPR 2700)
3	Parentage	KM 55 x U 22/B
4	Breeding Method	Pedigree method of breeding
5	Year of release	2012
6	Release through CVRC/SVRC	SVRC
7	Crop duration	100-105
8	Season	Kharif and Rabi
9	Potential yield	30-35 q/ha
10	Area suitability	Andhra Pradesh. Suitable for early and late Kharif situations and irrigated Rabi situations in all ragi growing areas.
11	Salient features	Semi dwarf nature of plant. At flowering, light purple pigmentation was observed at leaf sheath. Compact and clumpy ear head. Tolerant to leaf blast and drought; Lodging resistant due to culm strength. Large compact ear head.



TIRUMALA

1	Crop	Finger millet (PPR 1012)
2	Variety	Tirumala
3	Parentage	AE 3077 X Ratnagiri
4	Breeding Method	Pedigree method of breeding
5	Year of release	2018
6	Release through CVRC/SVRC	SVRC
7	Crop duration	115-120
8	Season	Kharif and Rabi
9	Potential yield	30-35 q/ha
10	Area suitability	Ragi growing districts of Andhra Pradesh under rainfed conditions during Kharif and irrigated conditions in Rabi and summer.
11	Salient features	Purple pigmentation on nodes, leaf juncture and glumes. Lengthy fingers with tips incurved in nature. Stay green nature of the plant at harvest. It is tolerant to all the three types of blast viz., leaf blast, neck blast and finger blast. Grain quality is good. Medium bold brown colour grain. High fodder yield.



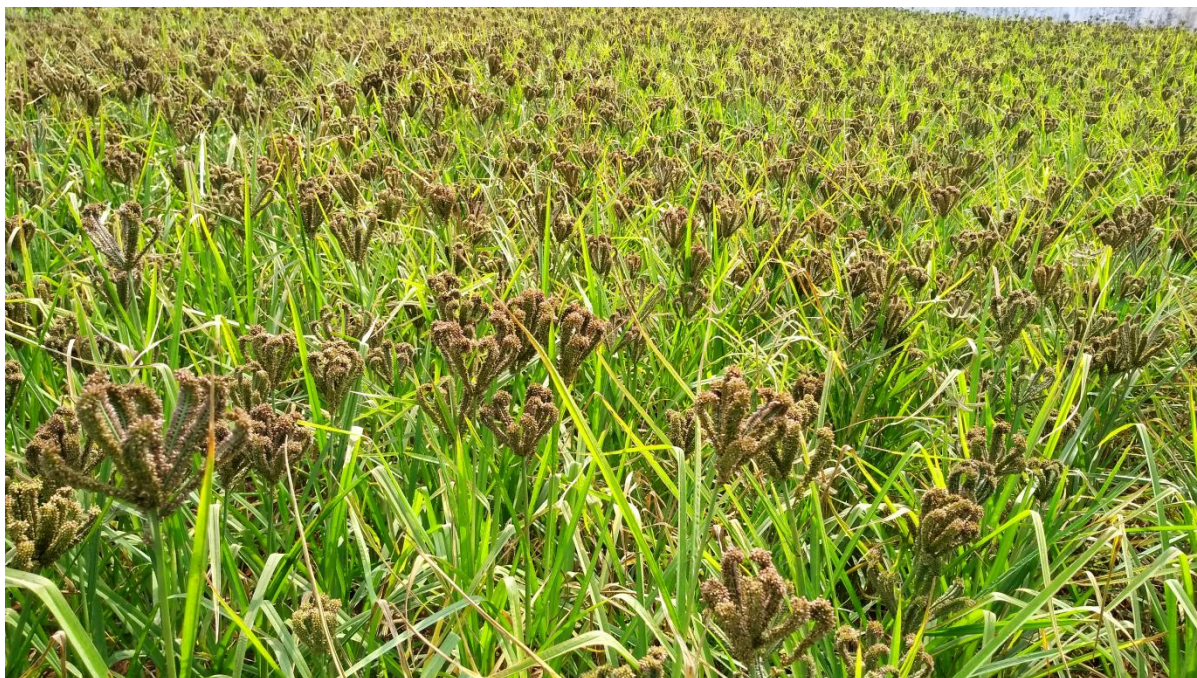
GODAVARI (PR 202)

1	Crop	Finger millet
2	Variety	Godavari PR 202
3	Parentage	A pure line selection from mettachodi of Vishakhapatnam.
4	Breeding Method	Pure line breeding
5	Year of Release	1974
6	Release through CVRC/SVRC	CVRC
7	Crop Duration	110-120
8	Season	<i>Kharif and rabi</i>
9	Potential Yield	2800-3000 kg/ha
10	Area Suitability	Recommended and notified for whole country
11	Salient Features	Plants medium tall (110-120cm), green, erect with 4-5 tillers. Ears incurved with 6-8 fingers per ear. Grains orange brown with medium in size.



RATNAGIRI (PR 1044)

1	Crop	Finger millet
2	Variety	RATNAGIRI (PR 1044)
3	Parentage	It is a pure line selection from local metta chodi variety of Raghavapuram chintalapudi (taluk), district-west godavari (andhra pradesh), it was selected under acquisition number pm 629.
4	Breeding Method	Pure line breeding
5	Year of Release	1985
6	Release through CVRC/SVRC	CVRC
7	Crop Duration	110-113
8	Season	<i>Kharif andrabhi</i>
9	Potential Yield	2500-2800 kg/ha
10	Area Suitability	Recommended for cultivation in Andhra Pradesh both as rainfed, irrigated. The variety was notified for whole country.
11	Salient Features	Responds to fertilizers, drought tolerant, uniform maturity. It contains high percentage of proteins. Protein-14.43 gms./100 gms., ash-2.48 gms./100 gms., calcium-561.1 mg/100 gms., Iron-475 mg/100 gms., Niacin-0.43 mg/100 gms.



GOWTHAMI (PR 10-45)

1	Crop	Finger millet
2	Variety	GOWTHAMI (PR 10-45)
3	Parentage	GPU28/GE4931
4	Breeding Method	Pedigree breeding
5	Year of Release	2020
6	Release through CVRC/SVRC	SVRC
7	Crop Duration	115-120
8	Season	<i>Kharif and rabi</i>
9	Potential Yield	3000-3200 kg/ha
10	Area Suitability	Recommended for cultivation in Andhra Pradesh both as rainfed, irrigated.
11	Salient Features	Tolerant to lodging; Synchronized maturity; Reddish brown semi compact ear heads with top curved fingers.

